



Faculty of Medicine

Suez Canal University



Medical

Parasitology

Department

Program Specification- MD

PROGRAM SPECIFICATION

Program Title:

M.D. of Medical Parasitology

Code:

PAPA



Faculty of Medicine

Suez Canal University



Medical

Parasitology

Department

Program Specification- MD

Program Specification

A- Basic Information:

- **Program Title:** M.D .of Medical Parasitology.
- **Program Type:** Single Double Multiple
- **Department (s):** Medical Parasitology Department.
- **Coordinator:** Prof. Dr. Khaled Elshewy.
- **External Evaluator(s):** Prof. Dr. Mohammed Saad Younis.
- **Last date of program specifications approval:** the bylaws of the MD program in medical parasitology in the Faculty of Medicine, Suez Canal University were approved by the Supreme Council of Universities on 2016.
- **Date of program specification revision approval:** January 2017
- **Number of credit points for this degree:** 180 CP.

B- Professional Information:

1- Program Aim:

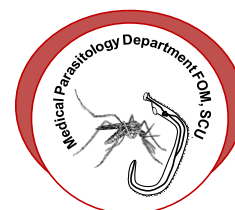
This program is designed to provide candidates with the advanced and professional knowledge in medical parasitology. The program is aiming to equip students with specialized skills to pursue a career in research, management, and/or teaching related to medical parasitology. The overall aims of the program are planned for the students to Identify the recent developments in the biology, epidemiology, pathogenesis and management of medically important parasites with special emphasis on the common and endemic parasitic infections.

2- Intended Learning Outcomes (ILOs) of the program:



Faculty of Medicine

Suez Canal University



Medical

Parasitology

Department

Program Specification- MD

a- Knowledge and Understanding:

By the end of this program, participants should be able to:

- a1 Identify the recent advances of parasitic infections and their relevance to human health and strategies for control.
- a2 Identify the biology and strategies for control of the vectors and intermediate hosts of human parasites.
- a3 Discuss pathogenesis and associated clinical manifestations of parasitic infections.
- a4 Identify the epidemiological and geographical distribution of parasites.
- a5 Describe the effect of environment on spread and control of parasitic infections.
- a6 Define recent knowledge from appropriate peer-reviewed journals.
- a7 Identify the basic and advanced knowledge for effective consultation in diagnostic parasitology.
- a8 Recognise the principles of clinical research ethics, design, implementation and interpretation.
- a9 Recognise the principles of ethical and medico-legal aspects as well as quality measures in professional practice related to parasitology

b- Intellectual Skills:

By the end of this program, participants should be able to:

- b1 Interpret properly a laboratory report for an accurate diagnosis.
- b2 Distinguish between pathogenic and non-pathogenic parasitic infections on evidence based.
- b3 Use problem solving skills to identify cases of parasitic infections, and select the appropriate methods of management.
- b4 Apply self-learning skills in data collection and dealing with newly emerging parasitic infections.
- b5 Classify parasitic infections in relation to system, organs, and tissue affected.
- b6 Apply the sophisticated and recent laboratory techniques essential for the diagnosis of the parasitic infections.
- b7 Demonstrate competency assessment for parasitologists and laboratory personnel.
- b8 Employ appropriate statistics and implement quality control and quality assurance in the



Faculty of Medicine

Suez Canal University



Medical

Parasitology

Department

Program Specification- MD

diagnostic parasitology labs.

b9 Design a laboratory or field based research project.

b10 Write scientific paper

b11 Assess risk in practicing medical parasitology

c- Professional and Practical Skills:

By the end of this program, participants should be able to:

- c1. Use proficiency programs to improve parasitology laboratory practices and techniques.
- c2. Perform all laboratory diagnostic methods required in the course specifications using recent available technology.
- c3. Develop and design a research work or a survey project in the field of parasitic diseases..
- c4. Develop effective strategies for controlling and prevention of parasitic infections.
- c5. Develop quality control measures in all diagnostic procedures required.
- c6. Write parasitology report.

d- General and Transferable Skills:

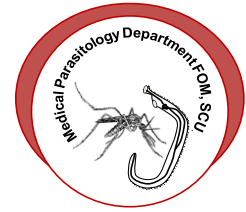
By the end of the program, participants should be able to:

- d1 Communicate with other using effective modes of communication (listening, nonverbal, explanatory, questioning, face-to-face, telephone, e-mail, written) as appropriate.
- d2 Communicate properly to the referring clinical personnel when needed.
- d3 Conduct individual focused, clear and concise consultations and presentations at multidisciplinary conferences.
- d4 Gain an informed consent about procedures, research goals and benefits.
- d5 Interact with others without discrimination on the basis of religious, ethnic, sexual, or educational differences.
- d6 Practise positive work habits including punctuality, dependability and professional appearance.
- d7 Work effectively in teams to accomplish the duties required to gain their skills.



Faculty of Medicine

Suez Canal University



Medical

Parasitology

Department

Program Specification- MD

- d8 Perform self and peer- evaluation
- d9 Use effective computer skills.
- d10 Manage change and conflicts during group work.
- d11 Manage time effectively.
- d12 use different resources to obtain knowledge and information.
- d13 Conduct Scientific meetings

3-Academic Standards:

3a - External References for Standards (Benchmarks):

- The standards of the National Authority of Quality Assurance and Accreditation in Education (NAQAAE).Academic Reference Standards for postgraduates. Website: www.naqaae.org.

4- Curriculum Structure and Contents:

4a- Program duration:

The program lasts for a minimum of 3 academic years and maximum 7 years, as specified in the internal bylaws for postgraduate studies based on credit points system in the Faculty of Medicine, Suez Canal University approved on February 7th, 2016.

4b- Program structure:

MD Program Credit points (CP) structure:

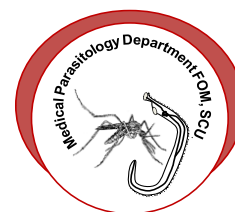
Total needed credit points for getting MD degree 180 CP. The program consists of First part 30 CP, Thesis 50 CP, and Second part 100 CP:

1. **The first part of the program:** 30 CP, its duration (15 weeks) for one academic semester. The first part comprises the following:
 - a. A course in Research Methodology planned and held in the Community Medicine Department of the Faculty of Medicine, Suez Canal University. This part includes 8 CP.



Faculty of Medicine

Suez Canal University



Medical

Parasitology

Department

Program Specification- MD

- b. Two electives each one has 2 CP. The students should select one elective which has not been selected in the Master Degree.
- c. The specialized courses in medical parasitology, planned and held in the Medical Parasitology Department. It includes 18 CP.

2- MD thesis: 50 CP, no scores for thesis. The candidate has the right to register his/her thesis protocol after 6 months from the degree registration. The first time for thesis defence after 2 years from the date of the faculty council approval on the thesis protocol.

3- The second part of the program: 100 CP, its duration (75 weeks) for 5 consecutive academic semesters. The second part comprises the specialized courses in medical parasitology, planned and held in the Medical Parasitology Department. This part lasts for 2 years ending by written and practical exams.

N.B. Every credit point includes 25 working hour (30% = 7 hours for face to face learning activities, and 70% =18 hours for self-learning activities).

5. Program Courses:

5.1- Level/Year of Program: First part of MD (30 CP)

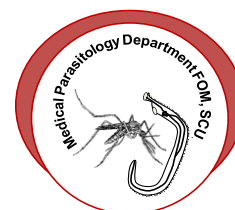
Courses			Assessment				
Code No.	Course Title	No. of Credit points	Written Exam			Oral exam	Practical or clinical Exam
			No of Papers	Duration	Marks		
BR	Research methodology & Biostatistics	8	1	3 hours	160		
PAPA51	Immuno-parasitology	9	1	3 hours	135	45	
PAPA52	Molecular parasitology	9	1	3 hours	135	45	
E	Two Elective courses*	2+2	1+1	1 hour+1 hour	40+40		
Total		30 credit points			600 marks**		

***Student should select one course of the following as an elective course:**



Faculty of Medicine

Suez Canal University



Medical

Parasitology

Department

Program Specification- MD

Two elective courses each one has 2 CP. The students should select two elective which has not been selected before in the Master Degree.

E01	Evidence Based medicine	(Community Department)
E02	Scientific Writing	(Medical Education Department)
E03	Quality in Medical Education	(Medical Education Department)
E04	Infection Control	(Microbiology Department)
E05	Critical Appraisal	(Community Department)
E06	Communication Skills	(Medical Education Department)

**every credit point equal 20 marks

5.2- Level/Year of Program: Second part of MD program (100CP)

Courses			Assessment					
Code No.	Course Title	No. of Credit points	Written Exam			Oral exam	Practical or clinical Exam	Continues assessment *(Portfolio)
			No of papers	Duration	Marks			
PAPA53	Theoretical course in Parasitology	60	3	3 hours For each paper	240 for each paper	180	360	540
	Practical course in Parasitology	30						
	***Scientific activities	10 (not included in the total marks)						
	Thesis	50						
Total		100 credit points (only 90 with marks)			1800**marks			

*Portfolio its scores distributed in the different parts of the portfolio and its total score included among total mark of second part

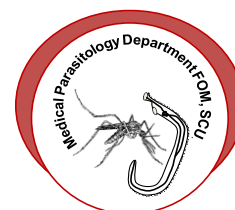
**every credit point equal 20 marks

***Scientific activities are not included in the total marks



Faculty of Medicine

Suez Canal University



Medical

Parasitology

Department

Program Specification- MD

5.3 Thesis: A faculty senior & junior supervisor from the staff members are nominated by the department council to prepare a proposal of the thesis protocol after the selection of a subject that is complementary to the research plans of the department. Data collection, methodologies, study question, time table, ethical considerations and budget are formulated by the candidate under guidance of his supervisors into a research project. The research protocol is then peer reviewed by two different staff members nominated by the Head of the department who share their ideas and comments with the supervisors to reach to the final form. The research protocol is discussed then openly in one of the department councils to be approved and diverted to the Faculty research committee where it is subjected to a critical appraisal to meet the research basic standards set by the committee. The final approvals of the research protocol are then issued by the committee of post graduate studies, the Faculty and University Council to be registered.

6. Program Admission Requirements:

- The program accepts candidates with Masters in Medical Parasitology with a grade of GOOD at least.
- Registration for the program opens 2 times/year, according to the internal bylaws for postgraduate studies of the Faculty of Medicine, Suez Canal University.

7. Student Assessment Methods:

- | | |
|----------------------|---|
| 7.1. Written (MEQ) | to assess the cognitive domain. |
| 7.2. MCQs | to assess the cognitive domain |
| 7.3. Oral Viva Cards | to assess higher cognitive and attitude domains. |
| 7.4. Practicals | to assess practical and presentation skills. |
| 7.5. Portfolio | to assess the cognitive, psychomotor and the affective domains. |

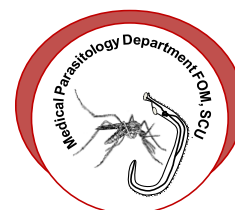
8 . Weighting of Assessments:

Type of exam	
First part (30 credit points= 600 mark)	
- Written exam	- 510
- Oral and practical exam	- 90



Faculty of Medicine

Suez Canal University



Medical

Parasitology

Department

Program Specification- MD

Total	600
Second part (100 credit points including 10 credit points not included in the total marks =1800 mark)	
- Oral exam	- 180
- Practical exam	- 360
- Written exam	- 720
- Portfolio	- 540
Total	1800

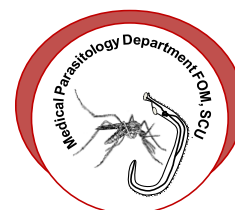
9- Regulations for Progression and Program Completion:

- The regulations for program completion follow the general regulations for the Faculty of Medicine, Suez Canal University for MD approved by the Supreme Council of Universities. The program is considered complete with the accomplishment of 2 summative assessments (for the first and the second parts) and the defense of a thesis developed and submitted for the purpose of acquiring the degree.
- **First part (40%)**
 - Passing level 60% of total marks of the exam and at least 50% passing level of the total written exam marks
- **Second part (60%)**
 - Passing level 60% of total marks of the exam.
 - Passing level 60% total of practical and oral exam.
- **Thesis/Assay**
 - Passing discussion is required for MD degree



Faculty of Medicine

Suez Canal University



Medical

Parasitology

Department

Program Specification- MD

10- Evaluation of Program Intended Learning Outcomes (ILOs):

Evaluator	Tool	Sample
1- Postgraduate students	Needs assessment questionnaires	Random sample of participants
2- Alumni(N/A since this is the first time to implement the program)	N/A	N/A
3- Stakeholders	Self-administered questionnaires DELPHI Focus groups	According to the method
4-External Evaluator(s) (External Examiner(s))	External audit of the program specifications	
5- Other		

Head of Medical Parasitology Department

Prof. Dr. Khaled Elshewy

Date: January, 2017